



Established 1925

KANSAS GEOLOGICAL SOCIETY

BULLETIN

Volume 90 Number 4

July—August 2015

IN THIS ISSUE

Memorials:

James B. Devlin

Harold I. Bergman

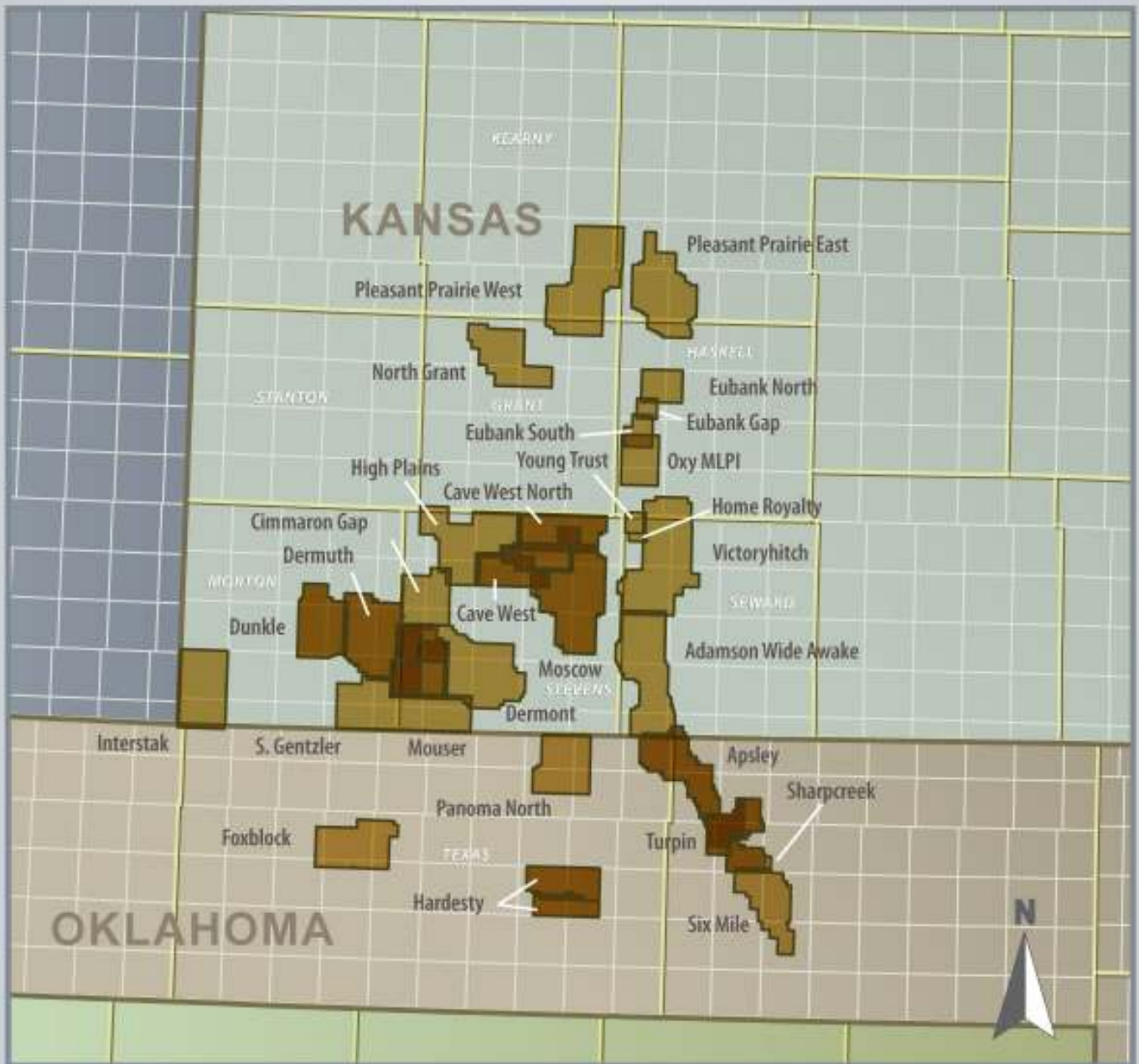
WSU Field Camp 2015

Wyoming

Page 10



3D Surveys now Available for Licensing



- 1994 - 2003 Vintage
- Good quality data
- Volume packages available
- 2D seismic also available



Kansas 3D Surveys

For more information, please contact:
Leigh Carder, American Geophysical Corporation
leigh.carder@anadarko.com
832-636-1438

Pending Management Approval

Date: 3/25/15

Table of Contents

Features

Featured photos WSU Field Camp 2015.....	10
Memorials	18

Departments & Columns:

KGS Tech Talks	4
President's Letter	7
Advertiser's Directory	8
From the Manager.....	9
KGS Board Minutes	10
Professional Directory	19 & 20
Exploration Highlights	24 & 25
Kansas Geological Foundation Memorials.....	26

ON THE COVER:

**In Yellowstone National Park, Grand Prismatic, a hot spring. One of many seen by this years
Wichita State University Geology Field Camp students.
Their main area of study was conducted in Big Horn Basin
Many more photos starting on page 10.**

CALL FOR PAPERS

The Kansas Geological Society Bulletin, which is published bimonthly both in hard-copy and electronic format, seeks short papers dealing with any aspect of Kansas geology, including petroleum geology, studies of producing oil or gas fields, and outcrop or conceptual studies. Maximum printed length of papers is 5 pages as they appear in the Bulletin, including text, references, figures and/or tables, and figure/table captions. Inquiries regarding manuscripts should be sent to Rebecca Radford, manager@kgslibrary.com or mailed to 212 N. Market, Ste. 100, Wichita, KS 67202. Specific guidelines for manuscript submission appear in each issue of the Bulletin, which can also be accessed on-line at the Kansas Geological Society web site at <http://www.kgslibrary.com>

SOCIETY Technical Meetings

2015 Technical Talks

The Technical Talks will break for summer and resume in September

For More Information or suggestions of speakers please contact Dave Clothier: dave@mccoypetroleum.com

Note: For those geologists who need 30 points to renew their licenses, there will be a sign-in sheet at each presentation and also a certificate of attendance.

*Tech Talks are held at Landmark Square
212 N. Market—4th floor
In the Wisdom Center*



**Please remember to check the website for the most up to date information on Technical Talks
<http://www.kgslibrary.com/techtalks.cfm>**



BOARD OF DIRECTORS

PRESIDENT

Frank Mize

PRESIDENT-ELECT

Tim Hellman

SECRETARY

Chuck Brewer

TREASURER

Leah Kasten

DIRECTORS

Brian Fisher

Ted McHenry

Paul Gunzelman

ADVISORS

Alan DeGood

M.L. Korphage

COMMITTEE CHAIRMEN

Advertising

Kent Scribner

Advisory

Tom Hansen

Larry Richardson

Annual Banquet

Bob Bayer

Budget Committee

Leah Kasten

Bulletin

Rebecca Radford

Continuing Education

Robert Cowdery

Distinguished Awards

Brian Fisher

Environmental

Kent Matson

Field Trip

Larry Skelton

Fishing Tournament

Randy Teter

Future Plans

Chuck Brewer

Golf

David Barker

Historian

Larry Skelton

Investment

Leah Kasten

Library

Roger Martin

Ted Jochems

Membership

Larry Friend

Nomenclature

John H. Morrison, III

Picnic

Wes Hansen

Public Relations

Robert Cowdery

Shooting Tournament

Larry Richardson

Technical Program

Dave Clothier

Ticket Sales

Bill Shepherd

A.A.P.G. DELEGATES

Ernie Morrison
2018

Douglas Davis
2018

BULLETIN STAFF

EDITOR

Ernie Morrison (316) 264-6366

ADVERTISING

Kent Scribner
Stelbar Oil Corp. (316) 264-8378

PROFILES/MEMORIALS

Robert D. Cowdery
Consultant (316) 267-9030

EXPLORATION HIGHLIGHTS

John H. Morrison, III
Independent O&G (316) 263-8281

STATE SURVEY

Rex Buchanan
KS Geological Survey (785) 864-3965

SOCIETY NEWS

KGS Library (316) 265-8676

EDITOR EMERITUS

Wes Hansen (316) 263-7313
Larry Richardson (316) 262-8427

K.G.S. LIBRARY

PHONE 316-265-8676 FAX 316-265-1013

email: frontdesk@kgslibrary.com or

Web: www.kgslibrary.com

LIBRARY MANAGER

Rebecca Radford 265-8676

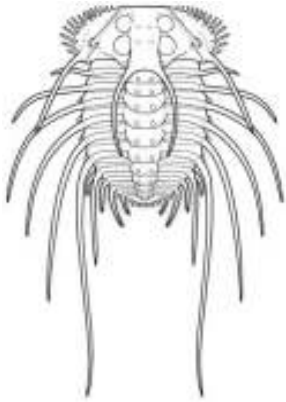
manager@kgslibrary.com

The KGS *Bulletin* is published bi-monthly by the Kansas Geological Society, with offices at 212 North Market, Wichita, Kansas 67202 Copyright 2015, The Kansas Geological Society. The purpose of the *Bulletin* is to keep members informed of the activities of the Society and to encourage the exchange and dissemination of technical information related to the Geological profession. Subscription to the *Bulletin* is by membership in the Kansas Geological Society. Limited permission is hereby given by the KGS to photocopy any material appearing in the KGS *BULLETIN* for the non-commercial purpose of scientific or educational advancement. The KGS, a scientific society, neither adopts nor supports positions of advocacy, we provide this and other forums for the presentation of diverse opinions and positions. Opinions presented in these publications do not reflect official positions of the Society.



Twenty-two Trucks Serving
Kansas—Colorado—Texas—Nebraska—Illinois

DST's
Back Pressure testing (G1 & G2)
Slick line services using the same Weatherford
Electronic Pressure Gauges used on DST's



1-800-728-5369
FAX 1-785-625-5620

www.trilobitetesting.com
trilobite@eaglecom.net

SHOPS LOCATED IN:
Hays, KS
Scott City, KS
Pratt, KS
Hugoton, KS
Oberlin, KS
Clay City, IL

CAN YOU NAME THE CRITTER?

Sponsored by Trilobite Testing, Inc.

Is your paleo up to date?

If you know the name of the trilobite,
submit your guess via e-mail to
manager@kgslibrary.com

Remember that *Trilobite Testing* is
sponsoring your efforts, so be sure to thank
Paul Simpson the next time you see him.

CONGRATULATIONS!!

Tom Dudgeon correctly identified
The last one as: Andegavia

Bulletin committee members and PhD's in
Paleontology are prohibited from entering.



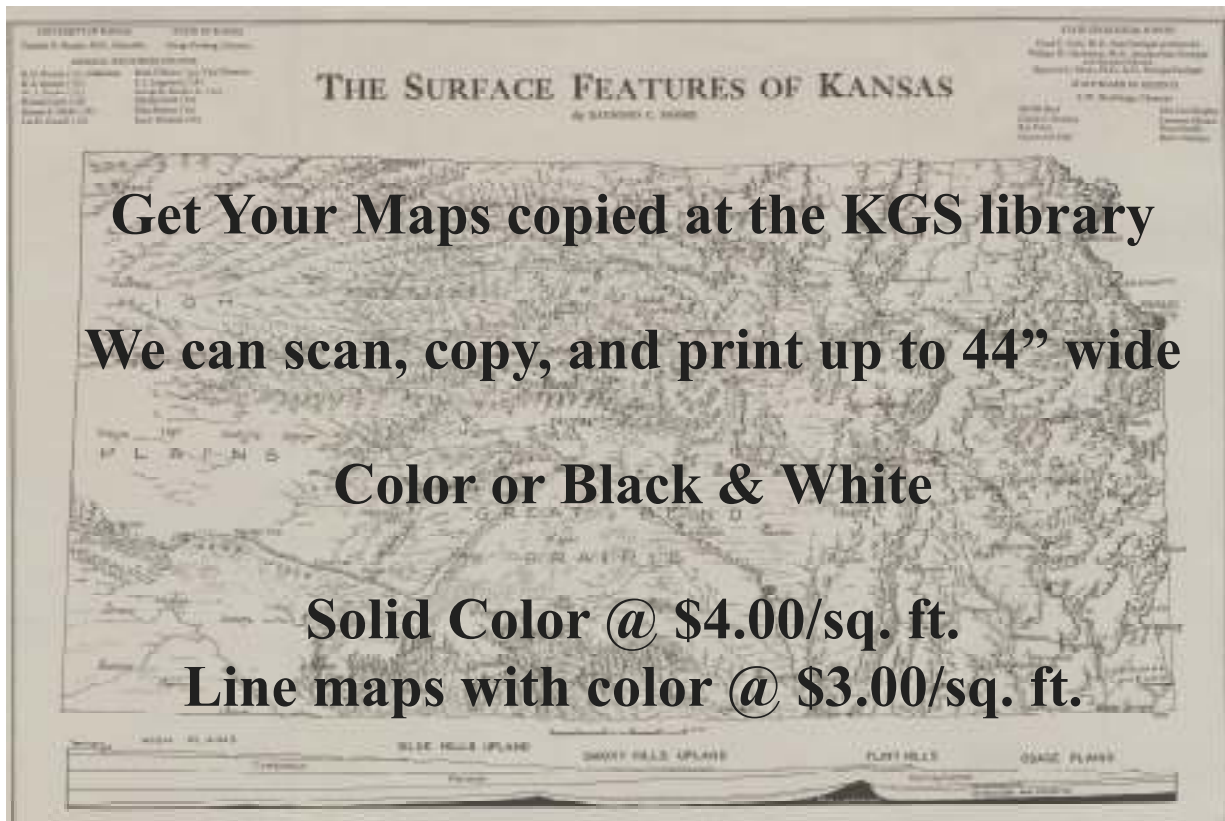
Get Your Maps copied at the KGS library

We can scan, copy, and print up to 44" wide

Color or Black & White

Solid Color @ \$4.00/sq. ft.

Line maps with color @ \$3.00/sq. ft.



President's Letter

Greetings fellow KGS members,

Business is improving, though perhaps not as fast as most of us would wish. I am happy to report the Library actually made money in May, so I am in hope that no other changes to our operational budget will be necessary.

I had the privilege of representing the Society at the AAPG ACE Convention in Denver in early June, and it was quite an experience. Our society had a booth, and Rebecca picked up a number of new memberships! Our digital library is definitely attracting attention. Not only in surrounding States, but internationally. I spoke with a gentleman that is interested in building "Google Subterranean", sort of a sequel to Google Earth. Also talked to several software companies about putting a workstation in our library to demo their mapping and analytical software, some of which is still under development. I am still in touch with those companies, endeavoring to bring this to fruition.

We have a number of activities coming up this summer that I wish to encourage everyone's participation. First is the KGS Golf Tournament, July 13 @ Rolling Hills. The Second will be the KGS Picnic which will be August 7 at All Star Sports West. Would also wish to remind everyone of the upcoming KIOGA Convention on August 2nd-4th. It will be at the Hyatt and Century II this year, so mark your calendars, and note the change in location for KIOGA!

Finally, as I am on my way out to another muddy location in the HEAT, I'm attaching a photo taken a few years ago in the Tetons. I'm still waiting to see some of those 'bucket list' photos from the rest of you, so send in your pictures, and you will be credited in the next issue of the KGS Bulletin!

Frank S. Mize
President 2015



Kansas State University
DEPARTMENT OF GEOLOGY

Graduate education for active professionals in this innovative program, workshops, site visits and distance courses help professionals advance in their careers. Whether your goal is to receive academic credit, certifications or a master's degree in geology, you'll find a path that leads to your career goals.

CHOOSE FROM SPECIALIZATIONS IN:

- ▶ Petroleum geology
- ▶ Environmental geochemistry
- ▶ Structural Geology
- ▶ Groundwater
- ▶ Exploration geophysics
- ▶ Geomicrobiology

LEARN MORE

Contact Pamela Kempton, department head, for more information at pkempton@k-state.edu. Or contact any of our program partners to learn more.

*K-State Global Campus: dce.k-state.edu
 Geology department: k-state.edu/geology
 Graduate School: k-state.edu/grad*



Log in to
 Walters Digital Library
 At
www.kgslibrary.com

Log in as our guest
 and see the Society's Database
 A convenient way to see what
 you might want to order!
 Call or email your order to:
 316-265-8676
frontdesk@kgslibrary.com

ADVERTISER'S DIRECTORY

	<i>page</i>
Allied Cementing Company, Inc	23
American Energies Corp. Nitrogen Rejection	13
Anadarko (American Geophysical Corp.)	2
Breckenridge Exploration Company	15
Duke Drilling	23
GeoSteering	14
Global Geophysical	15
Kansas Geological Foundation	26
Kansas State University	8
Lockhart Geophysical	23
Lone Star Geophysical Surveys	16
MJ Systems	21
MBC Well logging	23
Murfin Drilling Company, Inc	23
Neuralog	15
PARAGON Geophysical Services, Inc	13
Pratt Well Service	15
Professional Directory	19-20
Sunrise Oilfield Supply	23
Tomcat Drilling	23
Trilobite Testing	6
Walters Digital Library	2
Weatherford	27
Well Enhancement Services	14

ADVERTISER'S RATES: 2015

Full Page	B&W	Color
6 issues	\$2,000	\$2,500
3 issues	\$1,080	\$1,325
1 issue	\$480	\$525
1/2 Page		
6 issues	\$1,000	\$1,500
3 issues	\$540	\$825
1 issue	\$225	\$350
1/4 Page		
6 issues	\$600	\$900
3 issues	\$325	\$525
1 issue	\$150	\$250
1/8 Page		
6 issues	\$300	\$500
3 issues	\$175	\$325
1 issue	\$75	\$185
Professional Ad (Business Card)		
6 issues	\$90	\$180

For one-time ads, call Rebecca at 316-265-8676

From The Manager

Dear Members,

The heat of summer is upon us. I'm thinking this is a good thing, fields are drying out so farmers can get the wheat cut and drilling rigs can get to location. We just need a few more people to start drilling again.

The KGS had a booth at the AAPG meeting in Denver this past month. We had such good traffic at the booth, many of you Colorado members stopped by to say hello and I made many new contacts that are interested in joining the KGS. It was a great meeting.

KGS Golf Tournament will be on Monday, **July 13th**.

Watch the web site for more information as we get closer to that date. Registration forms will be available on-line or at the library or can be emailed upon request.

The **KGS Picnic** will be **Friday, August 7th** back at All Star Sports West. Wes Hansen will be heading the picnic up again this year so if you get a call for donations, please be generous.

I'm going to repeat our President's plea, if you are vacationing this summer, send us some photos of locations and the geology you might be seeing. Here's one of Pike's Peak that I took on our way home from the AAPG convention in Denver.



Respectfully submitted,

Rebecca Radford

Manager



**Let Us Print Your Geo Reports
And Save Your Time For Finding More Oil & Gas**

Top Quality Color Printing For Our Membership

Email your files to: kgsorders@gmail.com

Wichita State University Geology Field Camp 2015



The Grand Canyon of Yellowstone



Bullwinkle



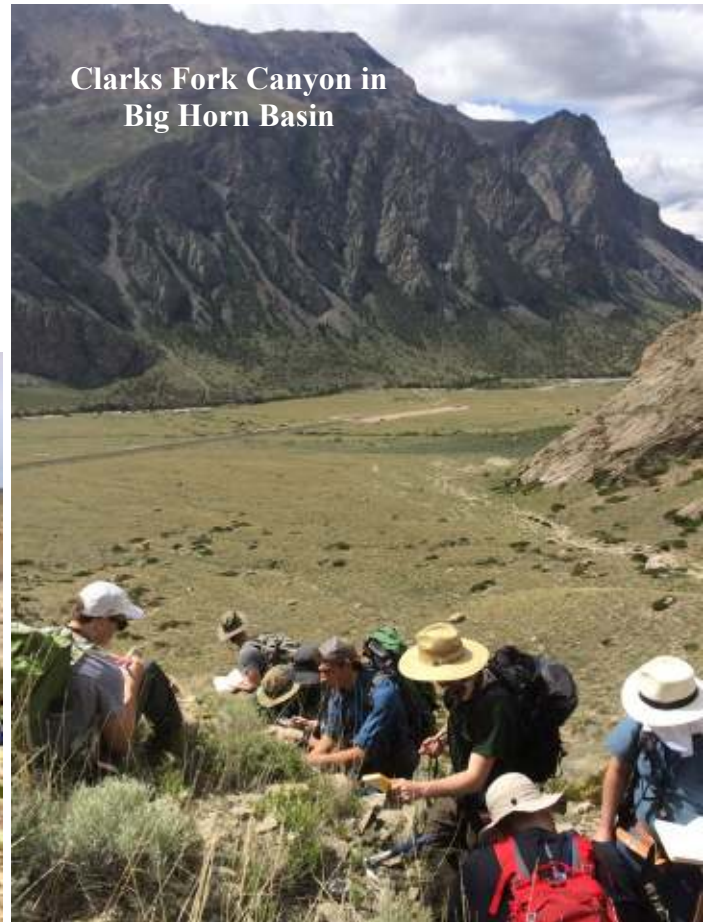


Liberty Cap, a dormant hot spring cone





Travertine at Mammoth Springs



**Clarks Fork Canyon in
Big Horn Basin**



Sheep Mountain

Robert F. Walters Digital Library

The most complete source for Kansas data

Database updated nightly

Day or Night

You can get to the data as you need it

www.kgslibrary.com

To Join: call 316-265-8676



Providing Quality Seismic Since 1993

Visit our website at
www.parangogeo.com



3500 N. Rock Rd., Bldg. 800, Wichita, KS 67226 316-636-5552
paragon@parangogeo.com

Chugwater Formation
At Singer Ranch



Dr. Parcell



WOULD YOU LIKE TO INCREASE YOUR PRODUCTION AT A FRACTION OF THE COST OF HORIZONTAL DRILLING?



Well Enhancement Services, LLC is jetting laterals utilizing new technology and coiled tubing. We now have the ability to place hundreds of gallons of acid hundreds of feet away from the well bore. This allows us to not only enhance existing production but to produce reserves previously unreachable. It has established itself by repeatedly increasing production in both new and existing wells. Contact us for more information, questions or to schedule your next well with **WES**.



“Tap into success.....with WES”

Please Contact Us:

Phone: (785) 625-5155

Fax: (785) 625-4151

Field: (785) 259-4638

wesofhays@hotmail.com
Box 87, Schoenchen, KS 67667

www.**GeoSteering**.com

281-573-0500
info@geosteering.com

Free introductory consultation with modeling: let us demonstrate whether images or propagation resistivity could add value to your well.

Personnel with degrees & 20+ years of oilfield experience

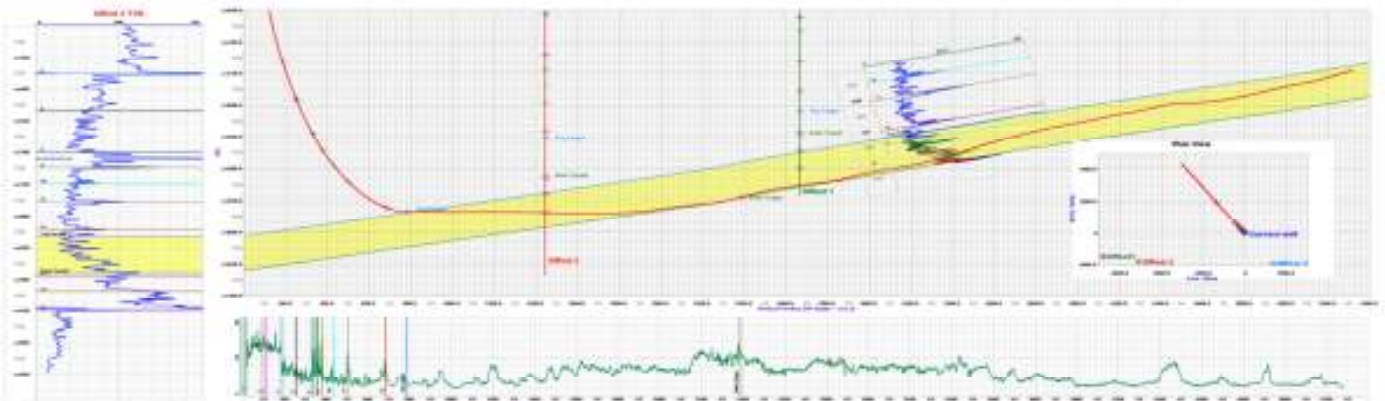
Proprietary software

TST interpretation for GR only jobs

Image displays / interpretation for jobs with azimuthal GR, resistivity or density

Resistivity modelling / interpretation for jobs with LWD propagation resistivity

Real-time (always)





Complete Well Service

Since 1946

P.O. Box 847
Pratt, Kansas 67124

Kenneth C. Gates
President

Kevin C. Gates
Vice President

1-800-660-7974
Fax: 620-672-5902

Member KIOGA /AESC

Equipment yard & field office:
1 3/4 miles North on Highway K-61 from 54 & K-61 Junction

Call us 24
Hours-A-Day
620-672-2531

- Experienced Crews
- Rod & Tubing Service
- Workover & Completions
- Swab Tanks
- Pole Masts-Single and Double Derricks
- Air Foam Unit
- Monitor & Water Well Drilling
- Reverse Circulating Pump & Power Swivel Equipment
- Statewide Oilfield Hauling
- Environmental Cleanup
- Vacuum Trucks/Water Trucks
- Dirtwork-Dozers, Grader, Backhoe

Hydrovac Excavation Service

- Cleaning cattle guards
- Mud tank cleaning
- Potholing
- Trenching
- Pipeline Crossings

www.prattwell.com



Eagle Vision Video
Well Inspection

Neuralog

Turning Paper Into Petroleum

Bryan Mills
Regional Sales Manager

Solutions for Today's Geoscientists

- Scan, Print & Digitize - Logs & Maps
- Geological Interpretation
- Master E&P Data Management

1.281.240.2525

bmills@neuralog.com • www.neuralog.com



**BRECKENRIDGE
EXPLORATION
COMPANY, INC**

SEISMIC ACQUISITION

Check us out at www.breckex.com

Breckenridge Exploration Co., Inc.
Highway 180 E
P.O. Box 789
Breckenridge, TX 76424
Bus: (254) 559-7566

Denver Colorado Office
600 17th Street, Ste. 2800 S
Denver, Colorado 80202-5428
Bus: (303) 563-5301
Mob: (254) 559-0587

Sensible Seismic Acquisition in the Mid-Continent and the Rockies

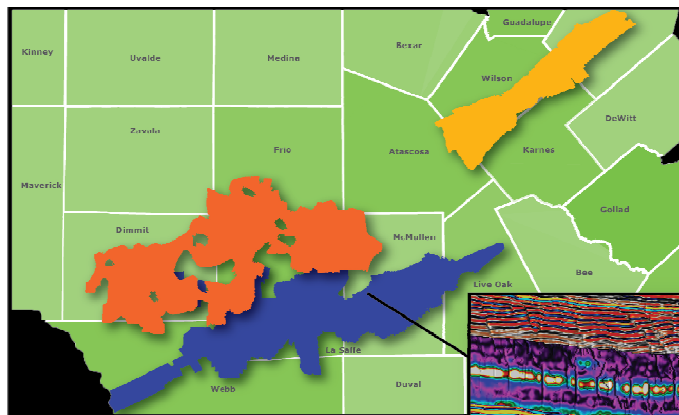


SOUTH TEXAS SEISMIC CONSORTIUM

Global's South Texas Seismic Consortium enables our multi client license holders to extract more value from their seismic investment at a significantly reduced price by:

- Applying the industry's leading full azimuth processing to produce a rich suite of 3D attributes including pre-stack elastic inversion volumes and rock properties
- Leveraging the participants' investments in well data to calibrate the models across large areas
- Providing depth interpretations and seismic volumes suitable for horizontal well planning by tying available formation tops across the entire study area
- Offering a price per square mile significantly lower than proprietary prices with participants able to access volume discounts

Participate and save both time and money. Receive new inversion ready processing; azimuthal and post stack time attributes with data benefitting from full aperture in migration and no edge effects.



Regional & Prospect Level Perspectives
at a Fraction of Proprietary Costs



Global Geophysical Services
+1 713-972-9200 www.globalgeophysical.com

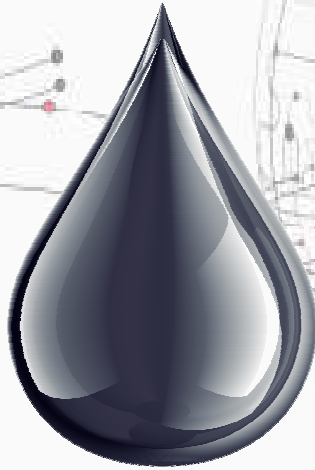
www.globalgeophysical.com/STSC or
Contact us at: STSC@globalgeophysical.com



LSGS

LoneStar Geophysical Surveys

It's Real Simple. It's Real Effective.



Locating every last drop.



Superior Seismic Acquisition System



Data Recording 2D, 3D, 4D & VSP



AHV-IV™ Commander 364



Permitting Services



HSE Management System



Front-End Services



Shot Hole Drilling



Brush Clearing



Chainsaw Crews



Heliportable



Submit a bid request online:

www.lstargeo.com

441 So. Fretz Avenue Edmond, Oklahoma 73003 (O) 405.726.8626 (F) 405.285.8521 lsgs1@lstargeo.com



Some rafting time on the Snake River



Rest stop—what a view!

The KGS Library is pleased to announce a new service

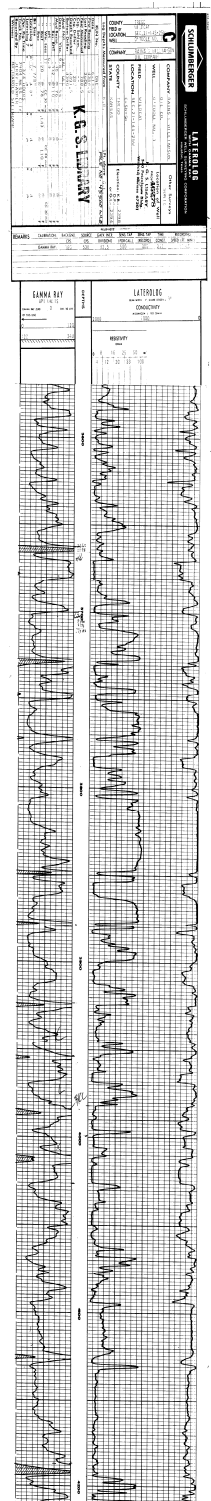
Creating
LAS files
from our logs
or yours

**\$20.00 per
curve!!**

Quick
turn-around

Send us your log file
or tell us which of
ours you would like
converted.

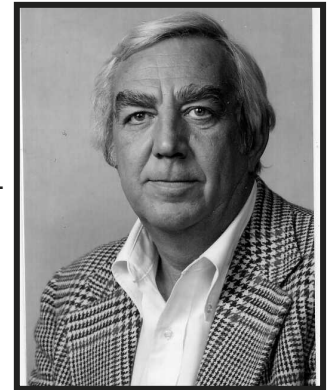
316-256-8676



The Kansas Geological Society maintains its ownership and copyright when converting library log files to LAS

Memorials

James B. Devlin, born October 31, 1932 in Wichita to Fern and Floyd Devlin, passed away April 25, 2015. Funeral Mass was held at 10:00 A.M., Friday, May 1, 2015, at Church of the Magdalen. Jim attended Cathedral High School where he met his wife of 62 years Kathleen Powers. He attended the University of Kansas and graduated with a degree in geology and petroleum engineering. He was a member of Delta Tau Delta fraternity. Jim joined the Marine Corps in 1955 and served as a First Lieutenant Infantry officer until 1958. He began his long career in the oil and gas business as a staff geologist with Conoco from 1958-1963. In 1963 Jim became a consulting geologist and independent oil operator of Jayhawk Oil Company. In 1982 he formed Viking Resources with Tom Wesselowski. Jim was a past President of KIOGA, an inductee into both the Kansas Oil and Gas Hall of Fame and the Kansas Oil Museum, past President of Wichita Country Club, and a found board member of the Sedgwick County Zoo among his many accomplishments. Jim is preceded in death by his sister, Mary Barry of Denver, CO. He is survived by his wife of 62 years, Kathleen; and his sister, Nadine Hickey of Virginia. Jim is also survived by his four children, Kathi Devlin Page (Stephen) of Dallas, Shannan Devlin Carnes (John) of Wichita, Shawn Powers Devlin (Cathy) of Wichita, Brian Patrick Devlin (Julie) of Boulder, CO; grandchildren, Collin Powers Devlin, Connor Kelly Devlin, Patrick Powers Devlin, Laine Elizabeth Devlin. Jim treasured his wife, children, and of course, his grandchildren. He loved his friends, KU sports, and telling a good joke. His friends will remember that he had an opinion on anything and you seldom had to ask for it. Jim and Kathy had many adventures traveling the world together and great trips with wonderful friends. For over 65 years, they treasured their time at their beloved mountain cabin in Spar City, CO. Jim was legendary for his great story telling, remembering the punch line to the best jokes, and being surrounded by so many friends, family and laughter. Big, gregarious, bright and honorable he inspired us all. He left a mark on everyone and every community he was a part of. And like a true United States Marine, was a great leader for the organizations he was involved with. A memorial can be sent to: The Marine Corp Scholarship Foundation, 909 N. Washington St., Ste. 400, Alexandria, VA 22314 in memory of James B. Devlin or online at: www.mcsf.org. Downing & Lahey Mortuary East.



Harold I. Bergman., 95, Retired Petroleum Geologist, died Monday, June 1, 2015. Graveside Service was held at 3:00 P.M., Wednesday, June 3, 2015, at Hebrew Cemetery. Preceded in death by his wife, Elinor Bergman. Survived by his daughters, Marsha Weiss, Betsy Kusin, Kathy (Garey) Marks, all of Houston; grandchildren, Jeremy (Karen) Weiss of Napa, CA, Meredith (Jonathan) Shikora of Los Angeles, CA, Shana Kusin of Portland, OR, Andrew Marks (Nataly) of Houston, TX, Zev Kusin (Paige Nilson) of Austin, TX, Annie Marks of Los Angeles, CA; 6 great-grandchildren. Donations can be made to the Mid-Kansas Jewish Federation, 400 N. Woodlawn St., Ste. 8, Wichita, KS 67208. Downing & Lahey Mortuary East.

PROFESSIONAL DIRECTORY

Kirk Rundle
Consulting Geophysicist

*3D Seismic Design, Acquisition to Processing QC.,
Interpretation and Analysis, Subsurface Integration*
7340 W. 21st. N., Ste. 100
Wichita, Kansas 67205

Office: 316-721-1421 Fax: 316-721-1843
Email: kirk@rundlegeo.com

ROGER L. MARTIN
Independent Petroleum Geologist

200 E 1st St, Ste 405, Wichita, KS 67202

Office 316-833-2722 Cell: 316-250-6970
KS Field Cell: 316-655-1227
Fax: 316-425-3829
Email: rogermartingeo@yahoo.com


Blue Ribbon Drilling, LLC
PO Box 279, Dewey, OK 74029

Phone and Fax: 918-534-2322
John's Cell Phone: 918-440-9639
Larry's Cell Phone: 918-440-9638
Jeff's Cell Phone: 918-440-9647
Email: johnroutree@bratco-operating.com

ALFRED JAMES III
Petroleum Geologist
Kansas - Colorado - Utah

4912 E. 29th St. N., Ste. 3, Wichita, Kansas 67220

SIPES # 1111
Office (316) 267-7592
james.alfred21@yahoo.com



Scott Banks
Petroleum Geologist
banksbs@aol.com
Cell: 316.253.8550

1700 N. Waterfront Pkwy.
Bldg. 300 • Suite C
Wichita, KS 67206

Phone: 316.558.5262
Fax: 316.558.5263

Banks Resources

M. Bradford Rine
Honorary Life Member—Kansas Geological Society

*Licensed Geologist—KS, #204
Registered Professional Geologist—Wyo. # 189
Certified Geologist—A.A.P.G. # 2647
S.I.P.E.S. # 1584 S.P.E. #109833-4*

PROSPECT EVALUATION • PROSPECT GENERATION
WELLSITE SUPERVISION • EXPERT TESTIMONY • OPERATIONS
PROPERTY EVALUATION • RESERVOIR STUDIES
DRLG./COMP. CONSULTATION

Suite 415 Office: (316) 262-5418
100 S. Main Fax: (316) 264-1328
Wichita, KS 67202 Cell: (316) 250-5941

WESLEY D. HANSEN
Consulting Geologist

Well site Supervision • Geologic Studies
212 N. Market, Ste 257
Wichita, Kansas 67202
Off: (316) 263-7313
Mobile: (316) 772-6188
whansen4651@sbcglobal.net



Paul Gunzelman
President/Geologist

Wichita, Kansas 316.634.6026
email p.gun@sbcglobal.net



KEVIN L. KESSLER
INDEPENDENT/CONSULTING PETROLEUM GEOLOGIST

WELLSITE SUPERVISION • GEOLOGIC RESEARCH
OIL & GAS PROSPECTS
KANSAS & EASTERN COLORADO

MAILING ADDRESS	PHONE
1199 N. PONDEROSA RD.	RES.: (316) 522-7338
BELLE PLAINE, KS 67013	MOBILE: (316) 706-6636
EMAIL: KKESSLER1199@AOL.COM	

MELLAND ENGINEERING, INC.
Petroleum Engineering & Geological Consulting

James E. Melland, P.E., P.G.
President

Office: (620) 241-4621 Fax: (620) 241-2621

jamesm@mellandengineering.com
www.mellandengineering.com

P.O. Box 841, McPherson, KS 67460

KGJ ENTERPRISES

Contract Oil & Gas Accounting &
Office Management

Kathryn G. James, MBA (316) 775-0954
4278 SW 100th ST. (316) 250-5989
Augusta, KS 67010 kgjames@onemain.com



Steve Van Buskirk
Petroleum Geologist
Van Buskirk Geo-Consulting

15171 Ridgfield Ln
Colorado Springs, CO 80921
and
514 Ramsey
Kiowa, KS 67070

Home: 719-487-8297
Cell: 719-293-2900
Steve@vbcinc.com

Available for Well site work



Geotech & Design Services

7171 Highway 6 North, #202
Houston, Texas 77095

Data digitizing, drafting & processing

Tel: (281) 858-7100

Fax: (281) 500-8534

helen.schubert@geotechmaps.com

Helen Schubert
Project / Sales Manager

www.geotechmap.com

Covey—The Well Watchers

“One Thousand Wells and Counting”

Curtis E. Covey

Wellsite Petroleum Geologist

Gas Trailer Cell: 316-217-4679
Email: wellsitegeo1@gmail.com

Office: 316-776-0367
6548 Bedford Circle
Derby, Kansas 67037

Gas Detection Trailer & Internet/Phone Communications

NOTICE!!!!

**WSU GEOLOGY CLUB
& Papa John's Pizza**

Papa John's offered WSU student organizations an opportunity to raise monies for their organizations.

The **WSU Geology Club** is participating
And **YOU** can help them!

When ordering pizza from Papa John's,
Use this code: **WSU004**
(those are zero's, not letter O)

With this code, the customer will receive 40% off their entire online order and WSU's AAPG Student Chapter will receive 10% of the money spent on the order.

**Eating pizza tonight?
Let's help WSU Geology Club!**

Monies raised will be used towards gas money to travel to local schools when they promote the geosciences to grade schools, registration costs for workshops, seminars and AAPG Student Expos, and social and academic events like an upcoming "Lunch and Learn" series next fall.

**We Invite You
To join**

**Kansas
Geological
Foundation**

*\$50.00 membership is
tax deductible*

Call 316-265-8676

*Or send checks to:
Kansas Geological Foundation
212 N. Market, Ste. 100
Wichita, KS 67202*

The Following Are For Sale

*Kansas Completion Cards:
Several sets (call for more information)*

*1 Set Kansas Well Log Bureau Drillers logs
(1920's—1970's—both east & west ranges)*

Oklahoma Completion Cards: 2 sets—entire state

Nebraska Completion Cards—West ranges

New Mexico Completion Cards

North Dakota Completion Cards

Utah Completion Cards

*Microfiche Electric Logs
Kansas
Oklahoma
Texas*

Geological Office Furniture:

- 8-drawer completion card cabinets
- 7-drawer cabinets
- Map cabinets—metal—2 available
- Map racks—different sizes—6 available

Call: 316-265-8676

Kansas Geological Foundation Video / DVD Collection

The KGF has an extensive collection of videos available for check-out at no charge. Only pay for shipping back.

These are ideal for classroom or general public viewing.

See the web for titles & descriptions
www.kgfoundation.org

Call 316-265-8676
Ask for Janice to check out videos

Recently Acquired DVDs

USGS (2012) World Petroleum Resources Project
“Supporting Data for the U.S. Geological Survey 2012 World Assessment of Undiscovered Oil and Gas Resources”

USGS (2008) Areas of Historical Oil and Gas Exploration and Production in the United States

USGS (2014) Petroleum Systems and Assessment of Undiscovered Oil & Gas in the Anadarko Basin Province, Colorado, Kansas, Oklahoma, and Texas USGS Province 58

USGS (2014) Map of Assess Tight-Gas Resources in the United States, 2014

USGS (2014) Map of Assess Coalbed-Gas Resources in the United States

USGS (2015) Map of Assessed Continuous (Unconventional) Oil Resources in the United States, 2014

Abstract of papers presented at the AAPG Annual Meeting, Denver, 2015

We also added a new publication to our reading collection:

Modern and Ancient Eolian Deposit: Petroleum Exploration and Production—Steven G. Fryberger, Lee Krystinik, Christopher J. Schenk



Logs Since 1971

www.mjlogs.com

6 MILLION LOGS

DEPTH REGISTERED

**INTERNET
DOWNLOADS**

**ONLINE
SEARCH**

SEARCH AND FILTER BY DEPTH

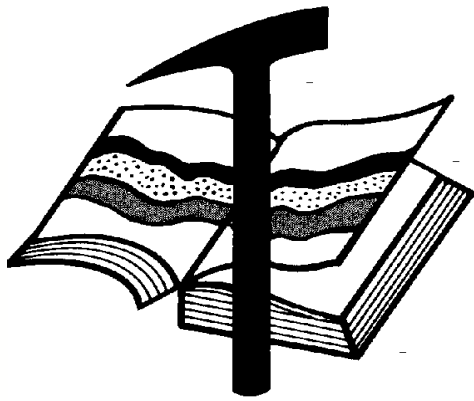
OWN THE LOGS

LogSleuth Software

CLUB WEB

WEB SITE CATALOGUE

1-800-310-6451



Kansas Geological Foundation

Web Site: www.kgfoundation.org

**212 North Market
Wichita, Kansas 67202**

A not-for-profit educational and scientific corporation

GOALS:

- promote geology and earth science
- preserve geological records
- establish memorials and endowments
- support field trips and seminars
- financial aid and grants to students

PLEASE HELP SUPPORT THE FOUNDATION

Kansas Geological Foundation Services

The Kansas Geological Foundation provides the following services as a part of the organization's commitment to educate the public regarding earth science.

Speaker's Bureau

A list of speakers available to talk about various aspects of geology may be obtained by contacting Janice Bright at the KGS Library, 265-8676. This service is free to the public.

DVD/Videotape Library

The KGF maintains a DVD & videotape library focused primarily on the various fields of earth science. These tapes may be checked out without charge by the public. To obtain a list of tapes, please contact the KGS Library, 212 N. Market, Ste. 100, Wichita, KS 67202, or call Janice Bright at 265-8676.

The Kansas Geological Foundation was founded in March, 1989 as a not-for-profit corporation under the guidelines of section 501(c)(3) of the tax code to provide individuals and corporations the opportunity to further the science of geology. It is dedicated to providing charitable, scientific, literary and educational opportunities in the field of geology for the professional geologist as well as the general public.

KGF can receive in-kind donations through which the donor may receive a tax deduction. Of equal importance, the KGF provides the financial resources to sort, process and file this data at the KGS library. If you have a donation to make, please contact the KGF at 265-8676.

Your tax-deductible membership donation helps to defray the cost of processing donations and to support public education programs about the science of geology. Annual membership begins at \$50.00 per year. Donations of \$100.00 or more are encouraged through the following clubs:

Century Club	\$ 100 to \$ 499
\$500 Club	\$ 500 to \$ 999
Millennium Club	\$1000 to \$5000
President's Club	\$5000 and over

WESTERN KANSAS
SOUTHERN NEBRASKA



EASTERN COLORADO
OKLAHOMA & TEXAS PANHANDLES

10 Drilling Rigs

10 Well Service Rigs & Roustabout Services

For contract information, please contact:
Blaine Miller / Drilling Department
316-858-8607 (Direct) or 316-267-3241

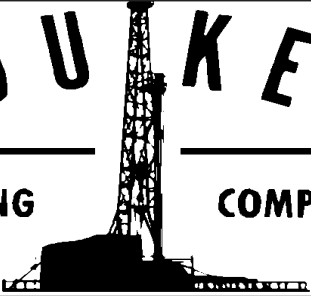
For contract information, please contact:
Alan Hays, Well Service Sprvsr.
785-421-2103 or 785-567-8739 (cell)

250 N. Water #300—Wichita, KS 67202

East Highway 24—Hill City, KS 67642

DUKE

DRILLING COMPANY



ROTARY DRILLING CONTRACTOR

620 Hubbard PO Box 823
Great Bend, KS 67530
Phone 620-793-8366

100 S. Main, Ste. 410,
Wichita, KS 67202
Phone 316-267-1331
Fax 316-267-5180



Great Bend (620) 793-5861 Ness City (785) 798-3843 Medicine Lodge (620) 886-5926

ALLIED CEMENTING CO., INC.

Acidizing Available at Medicine Lodge District

Russell (785) 483-2627 Oakley (785) 672-3452

LOCKHART GEOPHYSICAL

2D & 3D Vibroseis Acquisition
ARAM*AIRES Seismic Recording System

1600 Broadway, Suite 1660 • Denver, CO 80202-4915
(303) 592-5220 • info@lockhartgeo.com
for complete information go to: www.lockhartgeo.com

MBC

*WELL LOGGING & LEASING
UNMANNED GAS DETECTORS
MUD LOGGING
CERTIFIED INSTRUMENT TECH*

AUSTIN GARNER MARLA GARNER

**24-HOUR PHONE (620) 873-2953
MEADE, KANSAS**



FULL LINE SUPPLY STORE
With Pump Shop, New & Used Pipe,
Equipment and Fittings
Exclusive S-55 casing source

STORES:

Chanute, KS	620-431-6500	Ness City, KS	800-589-5733
El Dorado, KS	316-321-9323	Osawatomie, KS	913-755-2297
Garden City, KS	877-976-1700	Spivey, KS	620-532-5261
Hays, KS	785-650-0199	Trenton, NE	308-344-5426
Hugoton, KS	620-428-6604	Brighton, CO	303-659-4934

SALES OFFICE:
Wichita, KS 800-777-7672

Exploration Highlights

By John H. Morrison, III
Independent Oil & Gas



1-Red Oak Energy, Inc., Wichita (KS), has successfully completed their #1-25Walker (API 15-203-20303) as a commercially productive oil discovery on the eastern side of Wichita County, near the Scott County line. The White Fox pool opener was drilled to a total depth of 4,912 feet at site located in the SE/4 of section 25- T 16s- R 35W, about nine miles north and four miles east of the town of Marienthal. The well is producing an undisclosed amount of oil from the Marmaton formation. Closest established production in the vicinity lies nearly three miles away in the Beaver Cliff North field which Wichita-based Eagle Creek Corporation discovered last year.

2-Samuel Gary Jr & Associates, Inc., Denver (CO), has a new Lansing – Kansas City oil discovery in Sheridan County, northwestern Kansas. The # 1-25 K & K Farms (API 15-179-21390), spotted in the SW/4 of section 25- T 10s- R 30W, found new reserves over two miles southeast of established LKC production in the Fellhoelter field (estbl: 1978). Discovery Drilling tools were used to drill the well to a total depth of 4,552 feet. The new Back Nine Field lies about one and one-quarter miles northeast of the town of Grinnell.

3-Independent oil producer L. D. Drilling, Inc., Great Bend (KS), is producing crude oil from the Lansing-Kansas City and Marmaton formations at the #1-13 Ultra Unit (API 15-063-22251), spotted in the NW/4 of section 13- T 13s- R 29W, in Gove County. The wildcat well establishes the Gove Townsite South Field over one mile south of the Gove Townsite pool, which L. D. Drilling discovered last year with similar pay horizons. Production depth in the Marmaton is from 4,300 to 4,303 feet and LKC is from 4,159 to 4,185 feet. The Ultra Unit well was drilled to a total depth of 4,621 feet at location slightly over two miles south of Gove, Kansas.

4-Lawco Holdings, LLC, Bentonville (AR), has discovered new oil reserves in the Marmaton (Oswego / Fort Scott) formation at the #1-11 Reed (API 15-035-24620), located in the SE/4 of section 11- T 33s- R 7E, in Cowley County, southeastern Kansas. The new Hogback Basin Field resides over two miles from multiple zone oil and gas production in the Guthrie field (estbl: 1936), or about five miles east of Dexter, Kansas. Operator bottomed the well at a total depth of 3,469 feet.

5-Black Tea Oil LLC, Hays (KS), has opened a new Lansing – Kansas City oil field in Logan County. The #1 Younkin B (API 15-109-21389), spotted in the NE NW of section 35- T 14s- R 34W, began producing an undisclosed amount of crude oil in April this year. The well found the new reservoir over two miles from closest known production in the area in the Lone Butte South field (estbl: 2014, Marmaton oil), or nearly seven miles south and five miles east of Russell Springs, Kansas. Total depth was 4,680 feet. The new field is named Lone Butte Southeast.

6-Culbreath Oil & Gas Company, Inc., Tulsa (OK), has opened a new multiple zone-producing oil field in Rawlins County, northwest Kansas. Discovery of new reserves were made at the #1-7-A1 Dewey Trust (API 15-153-21113), located in the NE/4 of section 7- T 5s- R 35W, about ten miles south and four miles east of the town of McDonald. The wildcat well is producing an undisclosed amount of crude from the Lansing-Kansas City and Cherokee formations. Total depth is 4,864 feet. Several offset locations have been staked in the vicinity of the new find. The well establishes the Mirage Field.

7-BlueRidge Petroleum Corporation, Enid (OK), has a dual-pay oil discovery in Rawlins County, about four miles northwest of the town of Achilles, Kansas. The #1-11 Norman (API 15-153-21077) is producing an unknown amount of crude from the Shawnee (Toronto) and Lansing – Kansas City zones. The remote wildcat well was bottomed at 4,540 feet at site located slightly over six miles northwest of the Daisy field (estbl: 2012), which produces oil from the same two zones. The new field has been given the name of Norman.

8-New Gulf Operating LLC, Tulsa (OK), is pumping 25 barrels of oil per day, no water, at the #1-15 Marius (API 15-109-21292) – a 4,750 foot deep wildcat well in Logan County. The well is producing oil from the Marmaton formation at depth of around 4,300 feet at location in the SE/4 of section 15- T 14s- R 34W. Rotary total depth is 4,750 feet. The new Lone Butte Northeast Field lies over two miles northeast of the Lone Butte pool (estbl: 2012, Marmaton oil) and is almost seven miles southeast of Russell Springs, Kansas.

9-TAOS Resources Operating Company LLC, Houston (TX), has completed the #17-1 McConaghy (API 15-035-24605), NW/4 of section 17- T33s- R 5E, in Cowley County. The Big Badger South pool opener is producing oil from the Mississippian formation about four miles southeast of the city of Winfield, Kansas. Closest existing reserves in the area can be found two miles to the east in the Maddix North oil field (estbl: 1957, Mississippian). Total depth was obtained at 3,750 feet.



UPCOMING EVENTS LISTINGS

July 13—KGS Annual Golf Tournament at Rolling Hills Country Club

August 7—KGS Annual Picnic—All Star Sports West

August 2-4—KIOGA at Hyatt Downtown

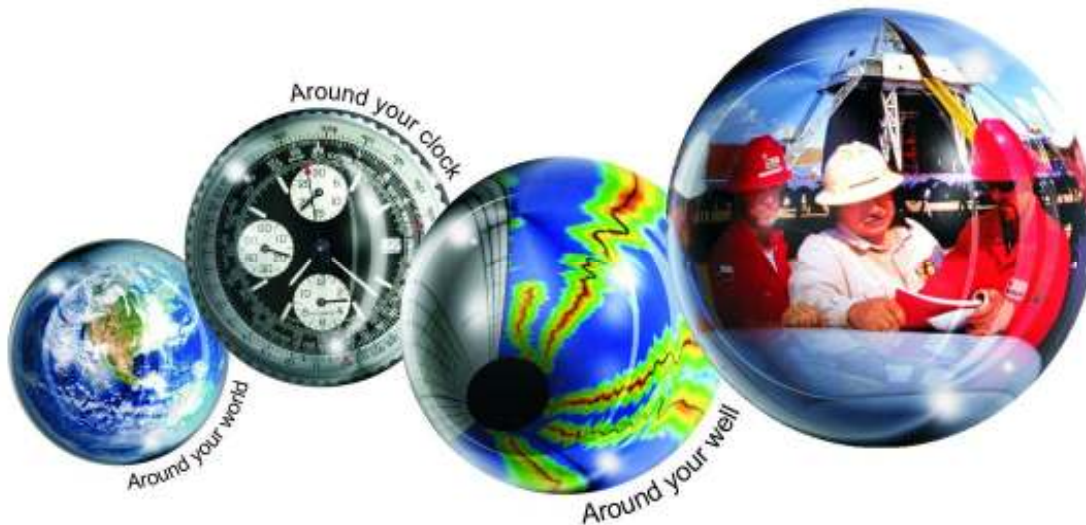
September 14-16 EKOGA—Prairie Band Casino, Mayetta, KS

September 18—KGS Annual Fishing Tournament—Pratt County Lake

Registration Forms for tournament events are available online

Kansas Geological Foundation Memorials

KGS Member	Date Deceased	Memorial Est.	KGS Member	Date Deceased	Memorial Est.
Dan Bowles	09/89	1990	Claud Sheats	02/02	2002
John Brewer	10/89	1990	Merle Britting	2002	2002
George Bruce	08/89	1990	Harold Trapp	11/02	2002
Robert Gebhart	01/90	1990	Donald M. Brown	11/02	2003
Ray Anderson, Jr.	11/90	1990	Elwyn Nagel	03/03	2003
Harold McNeil	03/91	1991	Robert Noll	09/03	2003
Millard W. Smith	08/91	1991	Benny Singleton	09/03	2003
Clinton Engstrand	09/91	1991	Jay Dirks	2003	2003
M.F. "Ted" Bear	10/91	1991	J. Mark Richardson	02/04	2004
James & Kathryn Gould	11/91	1991	John "Jack" Barwick	02/01	2004
E. Gail Carpenter	06/91	1993	Richard Roby	03/04	2004
Benton Brooks	09/92	1992	Ruth Bell Steinberg	2004	2004
Robert C. Armstrong	01/93	1993	Gordon Keen	03/04	2004
Nancy Lorenz	02/93	1993	Lloyd Tarrant	05/04	2004
Norman R. Stewart	07/93	1993	Robert J. "Rob" Dietterich	08/96	2004
Robert W. Watchous	12/93	1993	Mervyn Mace	12/04	2004
J. George Klein	07/94	1994	Donald Hoy Smith	04/05	2005
Harold C.J. Terhune	01/95	1995	Richard M. Foley	06/05	2005
Carl Todd	01/95	1995	Wayne Brinegar	06/05	2005
Don R. Pate	03/95	1995	Charles B. Moore	09/96	2005
R. James Gear	05/95	1995	Jack Heathman	05/06	2006
Vernon Hess	06/95	1995	Charles Kaiser	09/06	2006
E. K. Edmiston	06/95	1995	Rod Sweetman	08/06	2006
Jack Rine	07/95	1995	Karl Becker	10/06	2006
Lee Cornell	08/95	1995	Frank Hamlin	10/06	2006
John Graves	10/95	1995	Marvin Douglas	12/06	2006
Wilson Rains	10/95	1995	Robert W. Hammond	04/07	2007
Heber Beardmore, Jr.	09/96	1996	Eldon Frazey	04/07	2007
Elmer "Lucky" Opfer	12/96	1996	Pete Amstutz	05/07	2007
Raymond M. Goodin	01/97	1997	Charles Spradlin	05/07	2007
Donald F. Moore	10/92	1997	Donald R. "Bob" Douglass	09/07	2007
Gerald J. Kathol	03/97	1997	Vincent Hiebsch	11/07	2007
James D. Davies	08/88	1997	Glen C. Thrasher	03/08	2008
R. Kenneth Smith	04/97	1997	Peg Walters	06/08	2008
Robert L. Dilts	05/97	1997	Theodore "Ted" Sandberg	07/08	2008
Delmer L. Powers	06/72	1997	James Ralstin	11/08	2008
Gene Falkowski	11/97	1997	Earl Brandt	04/09	2009
Arthur (Bill) Jacques	01/98	1998	Walter DeLozier	05/09	2009
Bus Woods	01/98	1998	Don D. Strong	01/10	2010
Frank M. Brooks	03/98	1998	John Stone	02/10	2010
Robert F. Walters	04/98	1998	Craig Caulk	03/10	2010
Stephen Powell	04/98	1998	Joseph E. Moreland, Jr.	03/10	2010
Deane Jirrels	05/98	1998	Gene Garmon	03/10	2010
William G. Iversen	07/98	1998	James F. Dilts	05/10	2010
Ann E. Watchous	08/98	1998	Jerry Pike	05/10	2010
W.R. "Bill" Murfin	09/98	1998	Donald Hollar	06/10	2010
Donald L. Hellar	11/98	1998	Delbert Costa	08/10	2010
Joseph E. Rakaskas	01/99	1999	John Tanner	08/10	2010
Charles W. Steincamp	02/99	1999	William (Bill) Owen	09/10	2010
Robert and Betty Glover	10/96	1998	Harold (Hal) Brown	10/10	2010
Howard E. Schwerdtfeger	11/98	1999	Edmund G. Lorenz	11/10	2010
W. W. "Brick" Wakefield	03/99	1999	Thomas E. Black	05/11	2011
V. Richard Hoover	01/00	2000	Wayne E. Walcher	07/11	2011
Warren E. Tomlinson	01/00	2000	Henry F. Filson	07/11	2011
James A. Morris	01/00	2000	Thomas Ray	07/11	2011
Eric H. Jager	03/00	2000	Edgar E. Smith	09/11	2012
Kenneth W. Johnson	03/00	2000	Marilyn Messenger	06/13	2013
Dean C. Schaake	03/00	2000	Micheal Mitchell	09/13	2013
Fred S. Lillibridge	05/00	2000	Orvie Howell	11/13	2013
Jerry A. Langrehr	07/00	2000	James Thompson	11/13	2013
Clark A. Roach	07/00	2000	Dick Rowland	09/13	2014
Floyd W. "Bud" Mallonee	10/00	2000	Robbie Thompson	12/13	2014
Ralph W. Ruuwe	09/00	2000	Kris Kennedy	04/14	2015
Robert L. Slamal	02/01	2001	Annette Hedke	02/15	2015
Jerold E. Jespersen	06/01	2001	James Devlin	04/15	2015
William A. Sladek	06/01	2001			
Harlan B. Dixon	06/01	2001			
Edward B. Donnelly	08/01	2001			
Richard P. Nixon	02/02	2002			
Robert W. Frensley	12/01	2002			
Gerald W. Zorger	01/02	2002			
Don L. Calvin	03/02	2002			



All Around You

Weatherford has always been driven by your needs.

Now, with the addition of Precision Energy Services we're continuing to build a world of skills, services and technologies that revolve – and evolve – around you.

The result?

An expanded global network of 25,000 people, 730 service bases and 87 manufacturing facilities in 100 countries.

This increased local knowledge and service is there to support you anywhere, anytime. From midday in the Middle East to midnight in the middle of nowhere.

And with greatly strengthened capabilities in the critical evaluation skills of directional drilling and wireline logging, we can do even more to improve the profitability and productivity of your wells.

To see how our sphere of services can work for you, visit www.weatherford.com or contact either your Weatherford or former Precision Energy Services representative.


Drilling | Evaluation | Completion | Production | Intervention

© 2005 Weatherford International Ltd. All rights reserved. Incorporates proprietary and patented Weatherford technology.

CHANGE SERVICE REQUESTED

KGS BULLETIN
 July—August 2015

July 2015

Sun	Mon	Tue	Wed	Thu	Fri	Sat
			1	2	3 Library Closed	4 
5	6	7	8	9	10	11
12	13 KGS Golf Tourney	14	15	16	17	18
19	20	21	22	23	24	25
26	27	28	29	30	31	

August 2015

Sun	Mon	Tue	Wed	Thu	Fri	Sat
						1
2	3 KIOGA—Wichita	4	5	6	7 KGS Picnic	8
9	10	11	12	13	14	15
16	17	18	19	20	21	22
23	24	25	26	27	28	29
30	31					